



upstream
pittsburgh

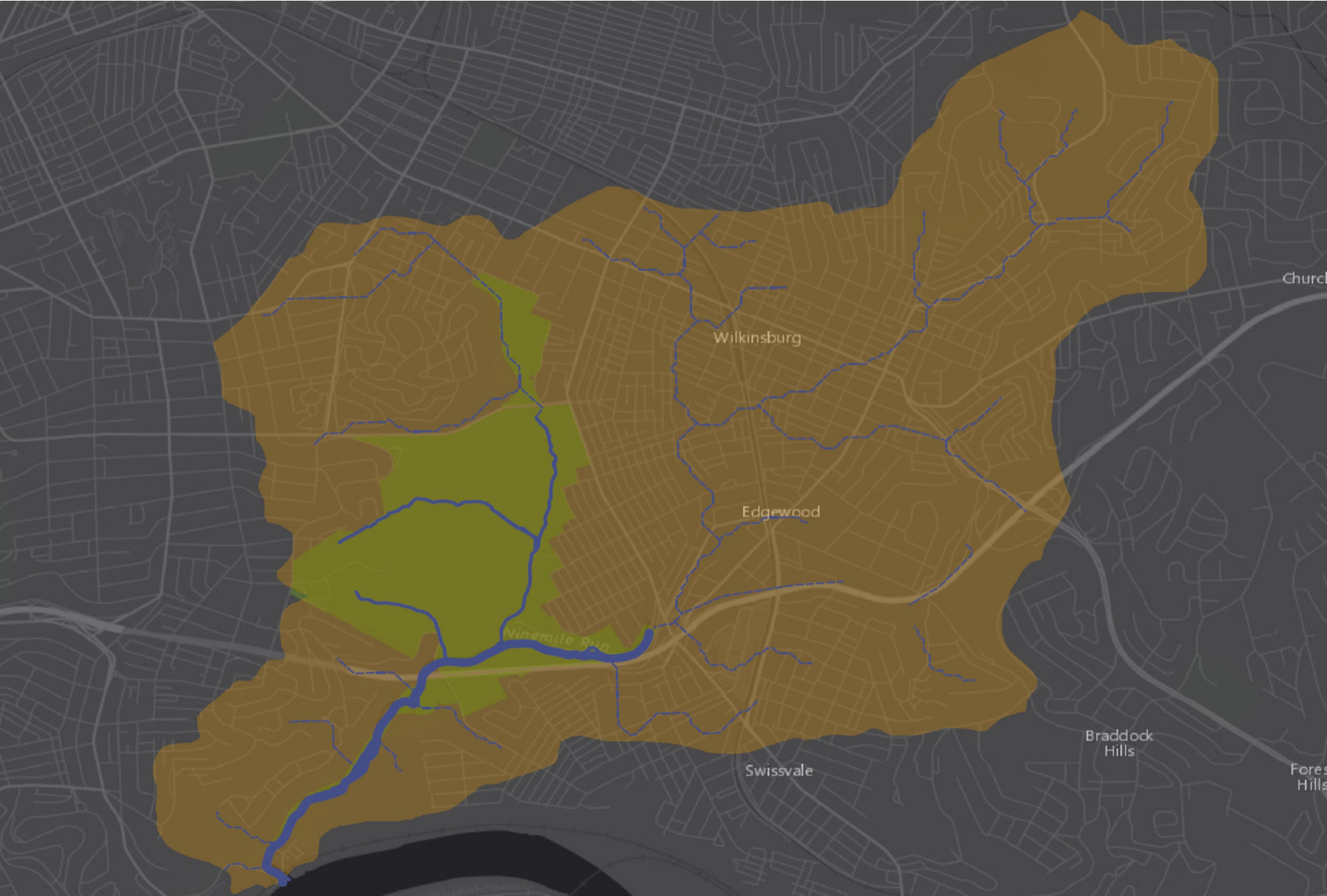
Healthy ecology, healthy community

Working in Urban Watersheds

Jan Raether

Plan/Build Manager

Nine Mile Run Watershed



Nine Mile Run



NMR History



NMR Restoration



Nine Mile Run



Watershed Association Days

- NMRWA was incorporated in 2001
- **Mission Statement:** NMRWA works to restore and protect the Nine Mile Run watershed. Through outreach and education, we involve local leaders and volunteers in community greening initiatives to foster a healthy urban environment.



NMR History



NMR History



NMR History



NMR History

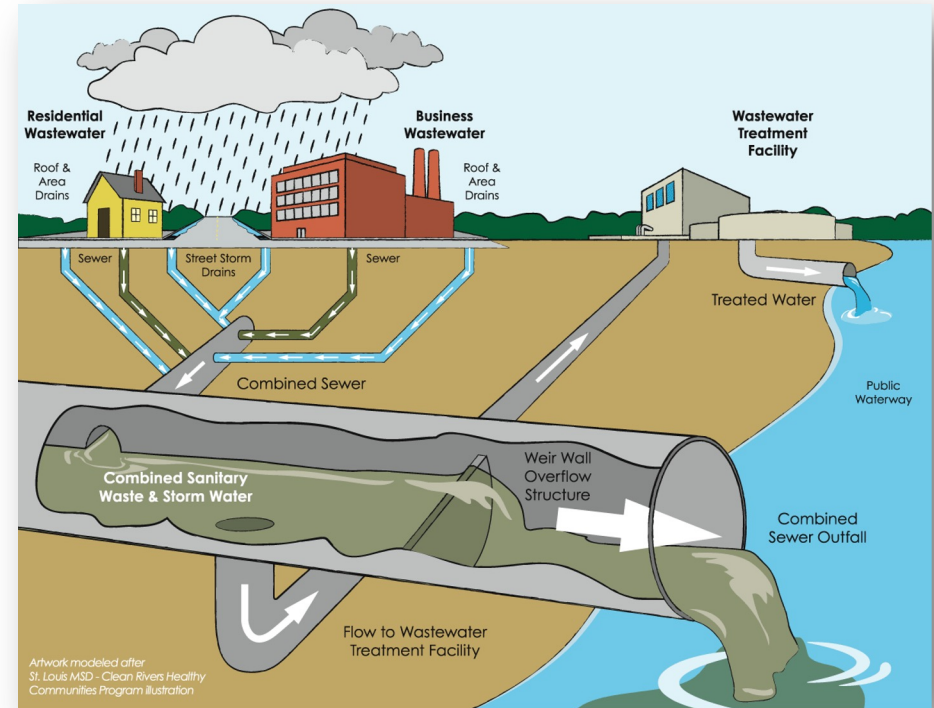


The Shed Today



Wet Weather Problem

- Combined Sewer Overflows (CSOs) are very common
- Western PA has more per capita than anywhere else in the US
- Just 1/10 of an inch can overload the system
- MS4 Issues throughout the watershed as well



Wet Weather Problem





upstream
pittsburgh

Healthy ecology, healthy community

Addressing the Wet Weather Problem: Legacy Projects

Projects: Urban Forestry



NINE MILE RUN
WATERSHED ASSOCIATION



412.371.8779

ninemilerun.org

Projects: Rain Barrel Initiative



BE A PART OF THE NINE MILE RUN
**RAIN BARREL
INITIATIVE**



Your Home
Your Stream

MAKE
the
CONNECTION

412.371.8779
www.ninemilerun.org

NINE MILE RUN
WATERSHED ASSOCIATION

Projects: StormWorks

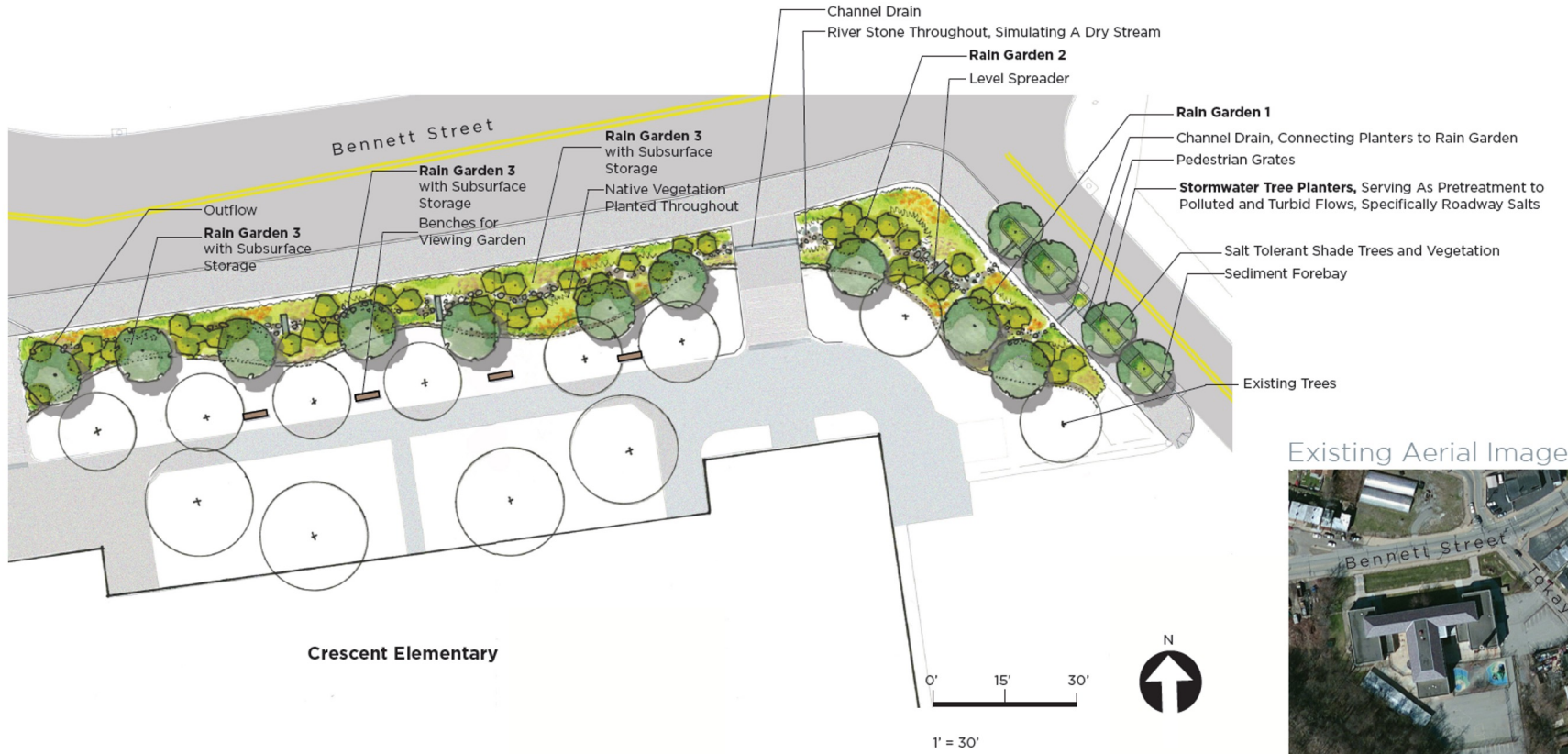


STORMWORKS

innovative rainwater management

Projects: Rain Gardens

Crescent Rain Garden



Existing Aerial Image



Projects: Rain Gardens Streetside GSI





upstream
pittsburgh

Healthy ecology, healthy community

Addressing the Wet Weather Problem: New Projects

Projects: WSRP



Not to Scale

20 July 2021

Wilkinsburgh Parking Lot (Draft)

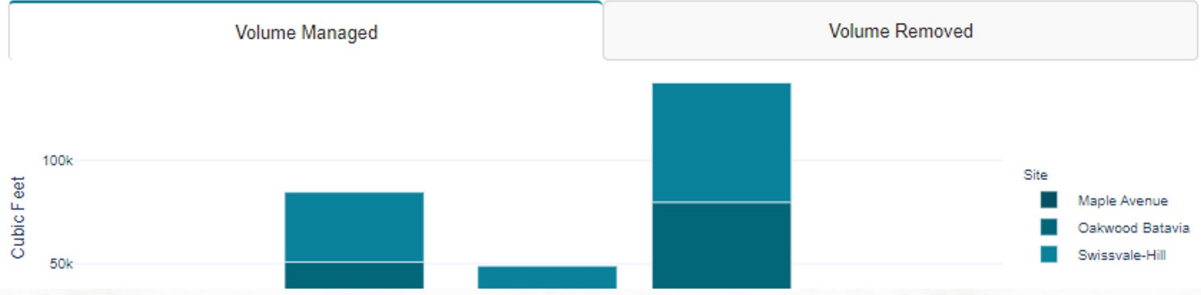
Projects: GSI Monitoring



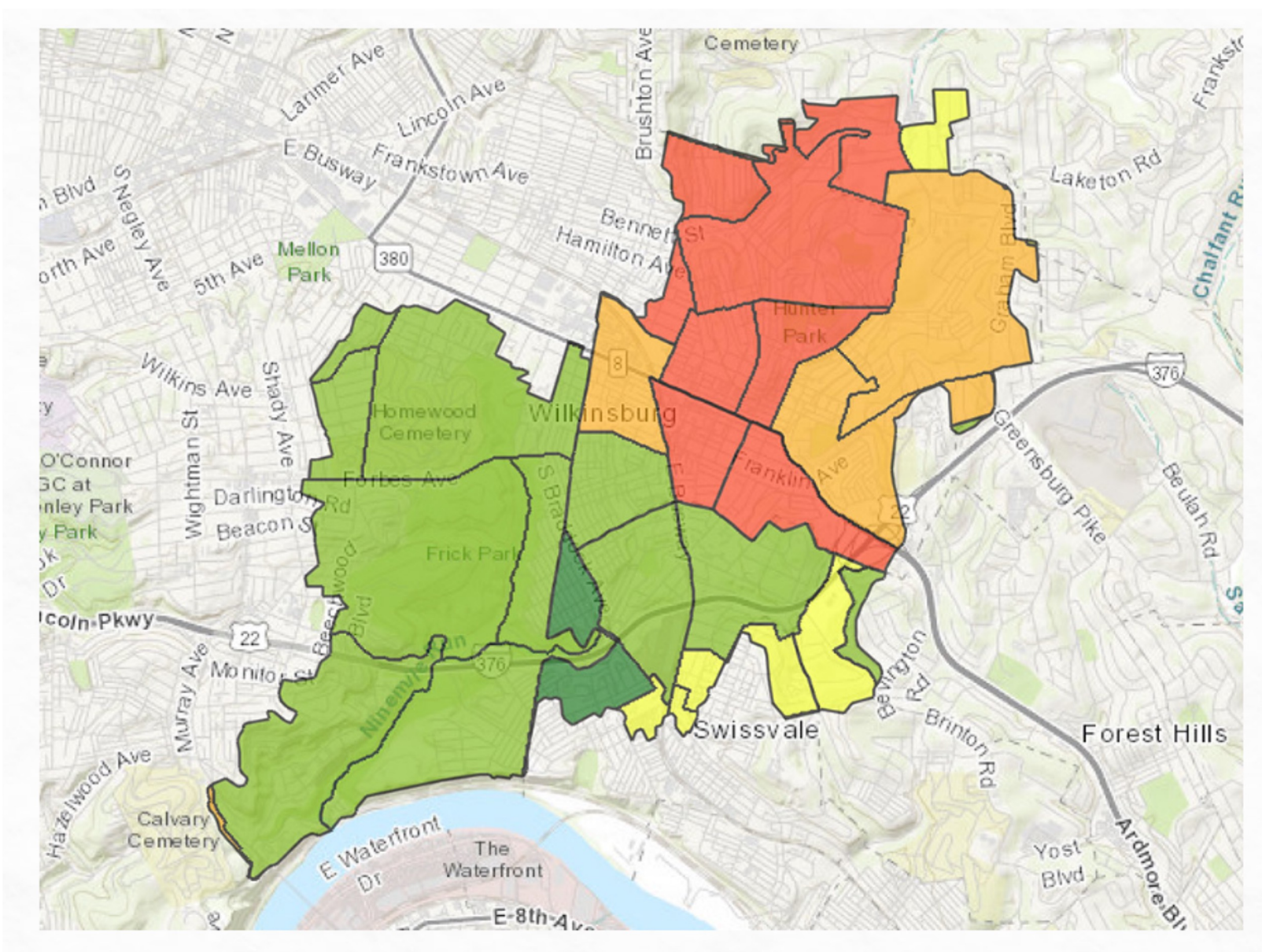
Current Status updated hourly

Maple Avenue	Oakwood Batavia	Swissvale-Hill	WSRP - South Ave	WSRP - Wallace Ave
Real-time data is currently not available for this site.	<p>Rain Garden Cell 1 Level 18.3 in. Filling Temp. 42.1 °F EC 8.07 mS/cm</p> <p>Rain Garden Cell 3 Level 1.2 in. Steady Temp. 40.1 °F EC 0.43 mS/cm</p> <p>Cell 3 Overflow Level 4.8 in. Steady Temp. 42.3 °F EC 1.53 mS/cm</p> <p>Battery 100.0%</p>	<p>Catch Basin Level 22.8 in. Steady Temp. 43.2 °F EC 72.11 mS/cm</p> <p>Lower Rain Garden Level 8.5 in. Filling Temp. 41.4 °F EC 2.30 mS/cm</p> <p>R-Tank Outlet Structure Level 0.0 in. Steady Temp. 39.6 °F EC (n/a) mS/cm</p> <p>Battery 100.0%</p>	<p>Catch Basin / Inlet #3 Level 3.9 in. Steady Temp. 47.1 °F EC 0.63 mS/cm</p> <p>Battery 100.0%</p>	Real-time data is currently not available for this site.
Rainfall (48 hrs) 0.30 inches	Rainfall (48 hrs) 0.29 inches	Rainfall (48 hrs) 0.28 inches	Rainfall (48 hrs) 0.28 inches	Rainfall (48 hrs) 0.27 inches

System Performance monthly volume totals



Projects: Equity Study





Climate Justice Collaborative **EAST HILLS, HOMEWOOD, WILKINSBURG**

Climate Justice Collaborative (CJC) guiding principals:
Combating Institutional & Structural Racism, Promoting
Accessibility & Inclusion, Illustrating Environmental Inequality,
Grassroots Organizing, & Modeling Ethical Practices

The CJC is a resident-driven community collaborative focused on healing and restoring health to the watershed communities. The collaborative's work is centered at the intersection of social and environmental justice; addressing human rights while nurturing our planet. Our mission is possible, but only through

Projects: Fern Hollow





upstream
pittsburgh

Healthy ecology, healthy community

Questions?

Contact:

Jan Raether

jan@upstreampgh.org